

2 0 0 1

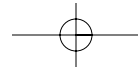
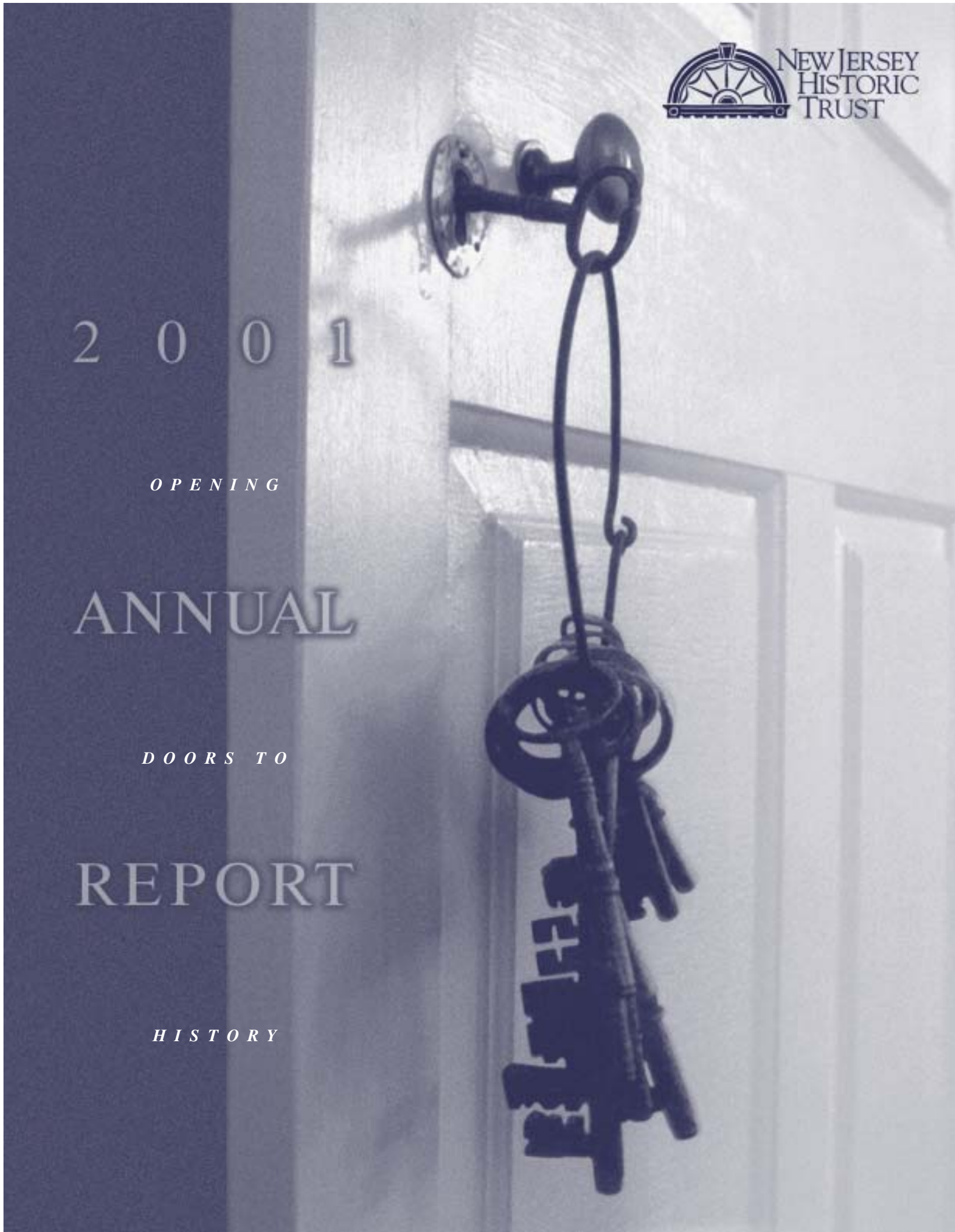
OPENING

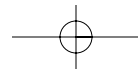
ANNUAL

DOORS TO

REPORT

HISTORY





The Trust's board members gather at Historic Wainford in Monmouth County.

THE NEW JERSEY HISTORIC TRUST

Established in 1967,
the New Jersey
Historic Trust is
the only nonprofit
historic preservation
organization in
New Jersey created
by state law.
The Trust provides
financial support,
protection and
technical assistance
through several
programs:

The **Garden State Historic Preservation Trust Fund** awards matching grants to both "bricks and mortar" projects and preservation planning efforts. *Read about the 2001 grantees, pages 12-14.*

The pioneering **Historic Preservation Bond Program** (1987-1997) provided more than \$52 million in grants to 182 capital preservation projects, one-third of which are still active. *Read about Completed Projects, pages 9-11.*

The **Historic Preservation Revolving Loan Fund** provides long-term, low-interest loans for acquisition, preservation, rehabilitation, or restoration of historic properties. Since 1988, the Trust has loaned a total of \$549,300 to historic sites.

The **Emergency Grant and Loan Fund** provides limited seed funds for critically needed work on endangered historic resources. The Trust hopes to expand the program.

The **Preservation Easement Program** ensures the preservation of privately held properties. The Trust holds 87 easements on historic properties.

Through the **New Jersey Legacies Program**, the Trust accepts donations of historic properties that are sold with protective easements. The Trust accepted its first donation, the former Lyric Hall in Rocky Hill, Somerset County. *Read about Lyric Hall, page 7.*

BOARD OF TRUSTEES

The Board of Trustees is composed of fifteen members, twelve of whom are private citizens appointed by the Governor for three-year terms. Appointed trustees must have demonstrated experience with the preservation of New Jersey's history and structures. Three members serve ex-officio and represent the State Treasurer, the Secretary of State, and the Department of Environmental Protection/State Historic Preservation Office. The Board of Trustees holds public meetings a minimum of four times each year at historic sites throughout New Jersey.

Appointed Trustees

Thomas E. Carroll, Cape May County

Tom restored several Cape May Landmark buildings that now operate as the well-known Mainstay Inn. A two-time president of the Mid-Atlantic Center for the Arts, which restored the Emlen Physick Estate and the Cape May Lighthouse, Tom has served as a Trustee since 1986 and is a former Chair of the Board.

Emily Croll, Mercer County

Emily holds a B. A. and M. A. in art history and has 20 years of experience working with history and art museums. She resides in Princeton, where she serves on the Princeton Borough Historic Preservation Committee.

Gail Greenberg, Burlington County

A resident of Burlington County since 1962, Gail holds a B.A. and M.A. in American history, has served as Camden County Historian since 1973 and also acts as the county's Historic Preservation Professional. She is the author of several State and National Register nominations and *A Comprehensive Guide For Listing A Building in The National Register of Historic Places*.

Carol W. Greene (Treasurer), Bergen County

A New Jersey native, Carol has an extensive background in real estate brokerage, appraising, property management, and investment. She serves on the Mahwah Township Historic Preservation Commission, the Historic Preservation Advisory Board, and the New Jersey Aviation Hall of Fame and Museum Board of Trustees. She has lectured and published on a wide variety of historical topics.

Lee Ellen Griffith, Ph.D. (Secretary), Monmouth County

A New Jersey native who grew up in Livingston, Lee Ellen has been director of the Monmouth County Historical Association, one of the state's oldest history organizations, for the past decade. In that position, she oversees five historic properties, and is active in many historical and educational organizations.

continued on next page

Ex-Officio Trustees

Bradley M. Campbell
Commissioner of the
Department of Environmental
Protection/State Historic
Preservation Officer

John E. McCormac
State Treasurer

Regena L. Thomas
Secretary of State

Staff

Harriette Hawkins
Executive Director

Janice Armstrong
Program Associate

Jennifer Britton
Administrative Fiscal Officer

Calista Cleary
Program Officer

Catherine Goulet
Public Information Officer

Wes Haynes
Program Officer

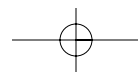
Paula Lassiter
Administrative Assistant

Carl Nittinger
Fiscal Officer

Kenneth Roginski
Financial Programs Assistant

Julia Taylor
Program Associate

New Jersey Historic Trust
PO Box 457
Trenton NJ 08625-0457
njht@dep.state.nj.us
www.njht.org



MESSAGE FROM THE CHAIR & EXECUTIVE DIRECTOR

*The first year of the millennium was a time
of celebration and reflection as well as tragedy.*

On September 11, the day before the Trust was poised to announce a new round of grants at our annual meeting, we were reminded, in the most horrific way possible, of what powerful symbols buildings are – even buildings from the recent past. Nevertheless, the events of that day have confirmed our board's commitment to preserving our landmarks, and the rightness of the voters of this state who have, for more than a decade, supported the preservation of the built environment. We will continue to expand the pool of resources available for preservation and develop new programs in response to the needs of the hundreds of organizations that are working to preserve history.

Our programs have enriched and been enriched by our partnerships with others. New Jersey's cultural community is more united than ever before. The *New Jersey Gazette*, the newsletter produced with our sister agencies in the Department of State, reaches 13,000 history enthusiasts. The "On the Road" constituent outreach programs bring the message about cultural funding opportunities to all corners of the state.

Both of us have participated in drafting a rehabilitation plan for the handsome but neglected buildings on the south side of Ellis Island that date from the earliest days of the US Public Health Service. We are working with Save Ellis Island!, the National Park Service, and the NJ Department of Parks and Forestry to pursue the planning and funding needed to bring these flagship buildings back into use and to enhance the powerful linkages between Liberty State Park and Ellis Island.

Over the last year, we have worked with the Commission to Celebrate the 225th Anniversary of the Revolution in New Jersey and advised the NJ State Historic Preservation Plan, which will debut a five-year preservation agenda. Needs highlighted by the plan include strengthening preservation at the community level and providing financial incentives for private owners of historic property, since an overwhelming number of the state's historic buildings are privately owned.

With the help of our new Governor and the Legislature, whose support has enabled the realization of so many important history initiatives over the last decade, we will work to broaden state incentives for historic preservation projects. Economic information from New Jersey and from the U.S. Treasury demonstrates that subsidies for historic building rehabilitation, whether as tax credits or grants, effectively "pay" for themselves and have measurable economic benefits for local and state economies that outweigh the initial investment.

The Trust anticipates another competitive round of funding under the Garden State Historic Preservation Trust Fund in 2002, with imaginative and professional proposals for restoration, rehabilitation and adaptive use projects that address the physical needs and development of our State's finest historic resources. We look forward to announcing a new list of capital preservation and planning grants and working with those recipients to meet new preservation goals.



Barbara J. Mitnick, Ph.D.,
Chair



Harriette C. Hawkins,
Executive Director

Appointed Trustees

continued from previous page

Mary-Anna Holden, Morris County

Mary-Anna is Council President for Madison Borough. She serves on the executive board of Preservation Action, a national preservation advocacy group, and enjoys researching, lecturing and writing about local history, American art and architecture.

Frank X. Moya, Mercer County

An architect with a practice in Trenton, Frank also practices in his native Puerto Rico. His concern for urban issues and community service has led him to serve as vice president for the housing development corporation, City Home, and as co-chair for the Trenton Enterprise Initiative, among other volunteer commitments.

Jerome E. Raymond, Esq. (Vice Chair), Essex County

Jerry is a resident of Glen Ridge and is president of Datamation Systems, Inc. of South Hackensack, a leading provider of anti-theft devices for computers and office equipment and specialized technology workstations. He is involved with local history and preservation organizations and is an active collector of early photographic and optical toys.

Barbara J. Mitnick, Ph.D. (Chair), Morris County

Chair of the Historic Trust, Barbara lives in Morristown in the former Charles Scribner country house that she and her husband restored in 1994. She is an independent curator, author, and lecturer and has served on numerous state and local committees dealing with New Jersey history and historic preservation. Her most recent curatorial project *George Washington and the Battle of Trenton: The Evolution of an American Image*, was exhibited at the New Jersey State Museum.

Donald R. Sanderson, Esq., Somerset County

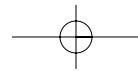
A New Jersey native and an attorney specializing in real property, probate and trust law, Doal's involvement in the Trust is a natural extension of his practice and his service as a volunteer for numerous organizations. Doal's regular attendance at Trust meetings began long before he was first appointed to the Board in 1986.

Alan R. Slaughter, P.E., Essex County

A professional civil engineer with hands-on experience in the restoration of historic structures, Alan lives in a 200-year-old Bloomfield home, serves on the local Historic District Review Board and has served as vice president, now trustee, of the Historical Society of Bloomfield. One of Alan's projects received a 1999 NJ State Historic Preservation Award, a 1999 Golden Trowel Award from the International Masonry Institute and a 2000 Merit Award from the US Department of Transportation.

Stephanie B. Stevens, Hunterdon County

Stephanie serves as chair of the Hunterdon County Cultural and Heritage Commission and as County Historian. A former teacher, she is the Township Historian in Readington Township where she founded three Township Museums utilizing a corps of volunteers. Each museum is located in a historically significant building and offers living history programs to school children.



A program sign announces that restoration work is under way at the Port Colden School, Warren County.

THE YEAR'S HIGHLIGHTS: October 2000–September 2001

The most important activity of the Trust is the administration of the Garden State Historic Preservation Trust Fund.

Non-Stop Grant Activity

In April 2001, the Acting Governor signed appropriations bills, authorizing \$12.3 million to 50 projects recommended for funding in the 2000 grant round. The Trust then hosted a full-day workshop for the new grantees at the Old School building in Cranbury, a grant recipient.

The 2001 funding round, the first for Historic Site Management Grants only, kicked off in April when the Trust sponsored a workshop for professional consultants and, for the first time, scheduled one-on-one staff appointments with potential applicants. The new format allowed applicants to ask staff members questions specific to their sites and applications after general technical questions were answered in the workshop.

Forty-nine applications for planning grants were received in May, and the total amount requested was \$1.4 million. The staff reviewed all applications and visited all qualified sites before the review panel, consisting of trustees and outside evaluators, met in August to make recommendations. The Board of Trustees approved a final list of recommended awards to 37 applicants, for a total of \$1.06 million in matching grants at September's annual meeting in Madison. *Read the list of funded projects, pages 12–14.*



The Commission to Celebrate the 225th Anniversary of the Revolution in New Jersey tours historic sites.

GRANTS AWARDED THROUGH GARDEN STATE HISTORIC PRESERVATION TRUST FUND (1997-) AND HISTORIC PRESERVATION BOND PROGRAM (1987-1997)

Funding Rounds	8
Grants Total	\$65.66 million
Projects Funded	269
Investment in Historic Preservation	\$341.5 million*
Applications for Funding	740
Total Funding Request	\$217.60 million

*Includes matching funds from public and private sources



Visitors enjoy an afternoon at Historic Morven, which was honored for its restoration work in 2001.

Legacies Receives First Donation

This year the Trust received its first donation of historic real estate through the New Jersey Legacies program. The former Lyric Hall was once a centerpiece of social and civic life in the Borough of Rocky Hill. It was given in December as a charitable donation from the estate of June Bliss, a long-time resident of the community. During a January open house, potential buyers and agents toured the unique property, originally constructed as a church in 1870 and later used as a theater and light industrial site. The building, which is located in a historic district, will be sold to a preservation-minded buyer with protective easements to ensure that the exterior will be restored and the site will not be developed. At the end of the year, the Trust was reviewing offers. The New Jersey Legacies Program is one of the first state programs to encourage donations of historic property as an estate-planning tool for private owners.



The Trust received Lyric Hall from the estate of June Bliss, shown here with her daughter, Frederica Rice. Another picture shows two grandchildren in front of the property.

CELEBRATED SITES

Morven, the Princeton Borough ancestral home of the Stockton family and former governor's mansion, was honored with an award from the State Preservation Office for its successful completion of Phase I of a restoration project, funded by a 1997 Trust grant. The Historical Society of Princeton also honored Morven.

The **Walt Whitman House** in Camden received the Victorian Society in America's Preservation Award for its restoration, which was funded by a \$392,600 matching grant from the Trust. The house is a National Historic Landmark and contains many original furnishings and personal belongings of Whitman.

Lambert Castle reopened in grand style after a multi-year restoration effort that included a \$1.1 million grant from the Trust, which funded a detailed historic structure report, brownstone restoration and other work on this "Gilded Age"-era landmark in Paterson.

The Alice Paul Centennial Foundation celebrated a groundbreaking ceremony in April at **Paulsdale**, a National Historic Landmark and home of suffragist Alice Stokes Paul in Mount Laurel. A \$477,847 grant from the Trust will fund structural repairs, mechanical upgrades and barrier-free accessibility.

An April ribbon-cutting event that marked the reopening of the **Higginsville Road Bridges** brought together representatives of Somerset and Hunterdon counties to celebrate their cooperative effort to adapt two historic iron truss bridges to meet modern roadway needs.

The **Loew's Jersey Theatre**, beneficiary of a \$1 million dollar matching grant, rededicated its unique animated clock tower in May. While interior restoration work continues, the event marked another public milestone in the theatre's re-emergence as a not-for-profit arts center and symbol of Jersey City's revitalization.

The first ceremonial check under the Garden State Historic Preservation Trust Fund was handed to the Women's Club of Red Bank at an open house in May. The club matched the Trust's \$16,500 grant to create a preservation plan for the 1870 **Anthony Reckless Estate**, home to the organization since 1921.

In July Middletown celebrated the reopening of **Marlpit Hall** for the first time since 1983. A \$390,015 matching grant funded restoration, structural stabilization and modernization of some systems for this furnished house museum owned by the Monmouth County Historical Association since 1936.

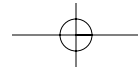
continued on next page



Trust Executive Director Harriette Hawkins speaks at Paulsdale's groundbreaking ceremony.



Trustee Lee Ellen Griffith (center) presents a commemorative check to the Red Bank Women's Club in celebration of its completed preservation plan for the historic Anthony Reckless Estate.



THE YEAR'S HIGHLIGHTS: *October 2000–September 2001*

continued from previous page

Special Recognition



Hunterdon County Historian and NJHT Trustee Stephanie Stevens (center) attended the ribbon cutting ceremony that marked the restoration of two iron-truss bridges in Somerset and Hunterdon Counties.

The Old Barracks Association honored Trustee Stephanie B. Stevens as the 2001 recipient of the Beulah Ann Oliphant Award, which is presented annually to a woman who has demonstrated distinguished leadership or scholarship in history or historic preservation. Ms. Stevens, a former teacher, is the Readington Township Historian, Hunterdon County Historian and Chair of the Hunterdon County Cultural and Heritage Commission. She is also the founder and original director of the three township museums that depict living history in early Readington, the author of three books on Readington history, numerous articles, and five nominations for National Register historic districts. Ms. Stevens was also a moving force in the establishment of the Readington Township Library, located in a restored train station, and is a former committeewoman and mayor of the township. Currently she is researching primary source materials on slavery in Readington Township with the intention of publishing her findings.

The Trust staff and board, as well as many grantees and friends to the organization, celebrated National Preservation Week in May by honoring Acting Governor Donald T. DiFrancesco for his vision and leadership as a proponent of the Garden State Historic Preservation Trust Fund and sponsor for many legislative measures supporting history. The event at Drumthwacket in Princeton also recognized the Trust's decade of grant giving, both under the Garden State Historic Preservation Trust Fund and the previous Historic Preservation Bond Program.

Outreach

Continuing efforts to implement recommendations of the 1999 Governor's Committee on the Preservation and Use of Ellis Island, Trust staff submitted a TEA-21 application for a tourism information center and development of exhibits and historical materials at Liberty State Park. The staff also wrote a request for proposal for a visitor evaluation study for Ellis Island and Liberty State Park. Both documents were designed to realize the committee's recommendation to increase heritage tourism and strengthen the interpretive ties between Liberty State Park and Ellis Island.

The *New Jersey Gazette* premiered in January to an enthusiastic response from the state's history and preservation communities. A cooperative venture initiated by the Historic Trust with the Historical Commission and State Archives, the *Gazette* provides a vehicle for the Trust to reach a broad audience and publicize its programs, grants and resources.

Posters promoting the NJ History License Plate were posted on NJ Turnpike toll booths during the busiest weeks of December holiday travel.

While the Trust's web site (www.njht.org) receives steady visitation, interest in the "Funded Projects" list increased more than two hundred percent after individual profiles for historic sites were posted. The Trust's list of cultural funding sources is regularly consulted, and the popularity of downloading applications continues to grow.

For the third consecutive year, the Trust coordinated the "Buried in NJ" program for October's Arts and Humanities Month celebration by selecting and promoting 19 events that featured historic burial grounds and archaeological research at historic sites through many creative tours, lectures and exhibits.



A graveyard tour and antique hearse contributed to "Grave Matters," the Hermitage's event for "Buried in New Jersey."



COMPLETED PROJECTS



Historical Society President Linda Waller and the Peter Mott House
Photo by Hoag Levins

Peter Mott House

Grant Award: \$94,897.44; Grantee: Lawnside Historical Society Lawnside Borough, Camden County

The 1845 Peter Mott House is the oldest known house in the community of Lawnside, which was founded as a free African-American settlement. Two Trust grants enabled the historical society to complete structural repairs, exterior restoration and interior rehabilitation for a museum that highlights local connections to the Underground Railroad.

The Historic Preservation Bond Program, founded in 1987, provided 182 matching grants for the restoration, preservation and rehabilitation of historic properties throughout the state. Awards ranged from \$20,000 to \$1.25 million, and leveraged a projected \$300 million investment in historic sites.

The last of the Bond program money was awarded in 1997. The following 12 projects and grants were completed and closed out by the Trust in 2001. They represent a commitment of more than \$4.04 million from the Trust for \$9.5 million in capital preservation expenditures by these organizations.

Collins-Jones House

Grant Award: \$85,474; Grantee: Burlington County Historical Society Burlington City, Burlington County

The Federal-style Collins-Jones House was the last residence of Isaac Collins, prominent printer and publisher of New Jersey's first newspaper, the *Jersey Gazette*. The Trust grant funded electrical and heating improvements and ongoing site restoration. Previous grants aided exterior restoration efforts.



Obadiah LaTourette Grist and Saw Mill

Grant Award: \$153,079; Grantee: Washington Township Land Trust of Morris County, Inc. Washington Township, Morris County

Located in the German Valley Historic District, the 1751 mill has an unusually extensive collection of mill equipment that chronicles the evolution of milling technology through several centuries. Once near collapse, the heavy-timbered building is now stable and watertight.



Restoration and stabilization at the Mill continues.

Ocean City City Hall

Grant Award: \$400,660.44; Grantee: Ocean City Ocean City, Cape May County

Displaying elaborate use of terra cotta, this 1914-vintage landmark was designed by Vivian Smith, a leading architect for many southern New Jersey coastal beach communities. The grant funded detailed masonry restoration and reconstruction of the monumental stairs.



COMPLETED PROJECTS

Morgan's Farm

Grant Award: \$58,020;
Grantee: Cedar Grove Historical Society
Cedar Grove Township, Essex County

With a long history of use as a farm, orchard and country estate, Morgan's Farm preserves a picture of the nineteenth century agricultural life in one of the most densely populated counties in the state. The grant funded the stabilization, restoration and rehabilitation of the farmhouse. Situated within a 14-acre municipal park, the farm will be developed as a museum of agricultural technology and early-twentieth century life in Cedar Grove.



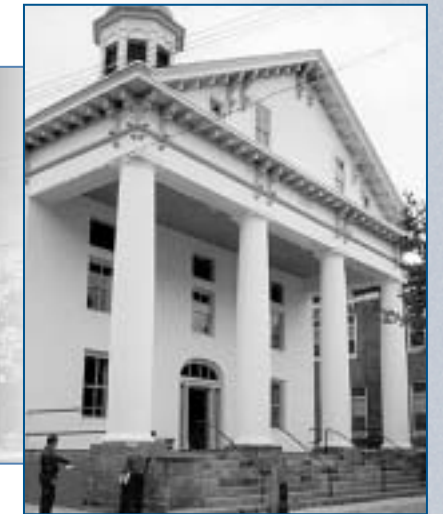
Hunterdon County Courthouse

Grant Award: \$578,350;
Grantee: Hunterdon County Board of
Chosen Freeholders
Flemington Borough, Hunterdon County

Best known as the site of the infamous 1935 Lindbergh kidnapping trial, the courthouse is notable for its early (1828) construction date and its inspiring Greek Revival-style architecture, including the prominent front portico. The Trust grant funded repair of deteriorated stucco and masonry, roof and window restoration, and site drainage improvements.



Before



After

St. Michael's Episcopal Church: Parish House

Grant Award: \$232,657;
Grantee: St. Michael's Episcopal Church
Trenton, Mercer County

The 1892 Parish House matches the church's unique castellated Gothic Revival Style, reminiscent of the designs of William Strickland and Thomas Ustick Walter. The Trust grant funded stabilization and efforts to prevent further water infiltration for the building, which hosts many community programs, meetings and various historical programs.



Higginsville Road Bridges

Grant Award: \$588,750;
Grantee: County of Somerset
Hillsborough Township, Somerset County

The two iron truss bridges that span the South Branch of the Raritan River between Somerset and Hunterdon counties represent nineteenth-century transportation, engineering, and technology in America and are rare surviving examples of that bridge type. The grant funded repair and reinforcement of the trusses to accommodate modern weight loads, painting and repairs to the stone abutments and retaining walls.



Before



After

Hardenburgh Avenue Bridge

Grant Award: \$142,906; Grantee: County of Bergen
Demarest Borough, Bergen County

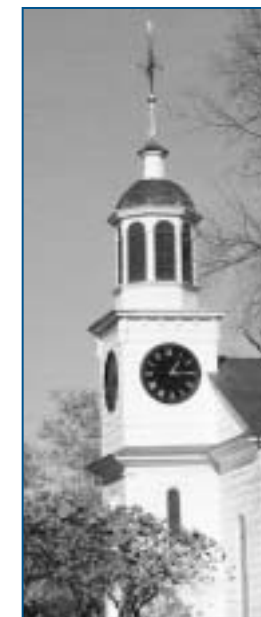
The Hardenburgh Avenue Bridge represents an unusual combination of two early-twentieth century bridge building technologies: brick masonry arch (1909), and jack arch construction in steel and concrete (1911). The grant funded stabilization of the bridge abutments, repointing and repair of the brick arch, and rebuilding of the stone parapet walls with the original stones.



Museum of Early Trades and Crafts, James Library Building

Grant Award: \$243,124;
Grantee: Museum of Early Trades and Crafts
Madison Township, Morris County

This robust Richardson Romanesque Revival-style building, which first served as the borough's library, has housed the Museum since 1970. The Trust grant helped uncover the building's most dramatic architectural features—groined vaulting, decorative stained glass and stenciling, fireplaces, handsome light fixtures and intricate woodwork. An earlier Trust grant funded exterior restoration work.



Christ Episcopal Church

Grant Award: \$315,348; Grantee: Christ Episcopal Church
Borough of Shrewsbury, Monmouth County

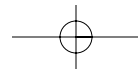
Built in 1769 and designed by Colonial architect Robert Smith, Christ Church is a Shrewsbury landmark. The church and its immediate setting have gracefully endured the changes of subsequent centuries. The grant funded structural stabilization and exterior restoration, including repair and correction of a condition that caused failure of the original truss.

Morven

Grant Award: \$1,147,999;
Grantee: New Jersey Department of State
Borough of Princeton, Mercer County

Richard Stockton, a signer of the Declaration of Independence, constructed Morven in the mid-eighteenth century. Between 1954 and 1981 it served as the Governor's official residence. The grant funded the first phase of a restoration campaign that included exterior restoration, provision of barrier-free access, and reestablishment of the Colonial Revival era gardens at this National Historic Landmark.





2002 GARDEN STATE HISTORIC PRESERVATION TRUST FUND-

Historic Site Management Grants

The Boards of the New Jersey Historic Trust and Garden State Preservation Trust approved a list of recommended awards to preserve 37 historic sites with funding from the Garden State Historic Preservation Trust Fund. Nearly \$1.06 million in matching grants will fund planning projects for historic preservation activity at a variety of sites in 17 counties throughout the State.

This category of Historic Site Management Grants was developed in response to applicants' request for a dedicated program to fund planning requests that would not be in competition with large capital projects. Of the 77 Historic Site Management applications received since 2000, the Trust has been able to fund 55 projects, more than 70 percent of all applicants.

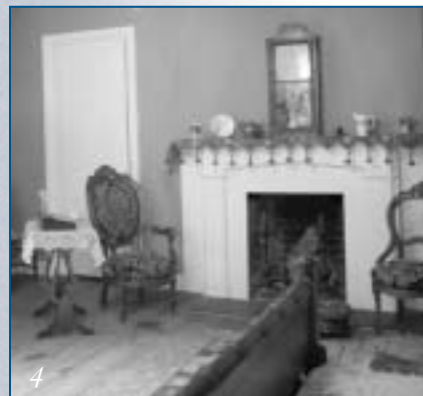
This is the first round of funding solely for Historic Site Management Grants, which range from \$5,000 to \$50,000, and will fund non-construction projects including preservation plans, historic structure reports, construction documents, nominations to the State Register of Historic Places, fundraising plans and barrier-free access planning.

13

Historic Site Management Grants, listed by county



1



4



9

1. **Bergen County**, Demarest Railroad Station, Demarest, \$26,662 to the borough for the preparation of a preservation plan and construction documents for the 1872 railroad station, now a senior center.
2. **Bergen County**, Historic Westervelt-Lydecker House, Woodcliff Lake, \$36,600 to the borough for the preparation of a preliminary preservation plan and landscape plan for this Dutch stone house, which was recently acquired by the borough.
3. **Bergen County**, The Castle, Rutherford, \$50,000 to Felician College for the preparation of a preservation plan and historic register nomination for this 19th-century campus landmark.
4. **Bergen County**, The Hermitage, Ho-Ho-Kus, \$7,500 to Friends of the Hermitage for a video script to provide a virtual tour for visitors who are unable to physically access this National Historic Landmark.
5. **Burlington County**, Gilder House, Bordentown, \$28,706 to the city for the preparation of a historic structure report to guide future preservation efforts at this local house museum, a vernacular dwelling that has been home to the local historical society since the 1930s.
6. **Burlington County**, Perkins Center for the Arts, Moorestown, \$25,628 to the Center for the design of an historically sympathetic addition to link two historic structures. The addition will provide a barrier-free entrance and facilities for this Tudor-style mansion that now hosts arts education.
7. **Burlington County**, Smithville Park, Eastampton, \$50,000 to the county for the preparation of a historic landscape master plan for the Smithville Historic District, the first county park, which includes 19th-century industrial and farm buildings.
8. **Burlington County**, Whitesbog Farm, Pemberton Township, \$39,207 to the Whitesbog Preservation Trust for the preparation of a preservation master plan for 28 historic buildings on a working cranberry farm and a cultural landscape survey for the 2,000-acre historic district and wildlife refuge.
9. **Camden County**, Barclay Farmstead/Croft Farm, Cherry Hill, \$22,875 to the township for the preparation of individual preservation plans for the c. 1828 Barclay Farmstead house museum, and the 19th-century Croft farmhouse, a rental property.
10. **Camden County**, Cathedral of the Immaculate Conception, Camden, \$15,712 to the Roman Catholic Diocese of Camden for a preservation plan and historic register nomination for this Jeremiah O'Rourke-designed Gothic cathedral.
11. **Camden County**, St. Joseph's Catholic Church, Camden, \$19,312 to the Roman Catholic Diocese of Camden for a historic register nomination and a preservation plan for the church complex, built for Polish immigrants, that will also assess possible community uses for the vacant school building.

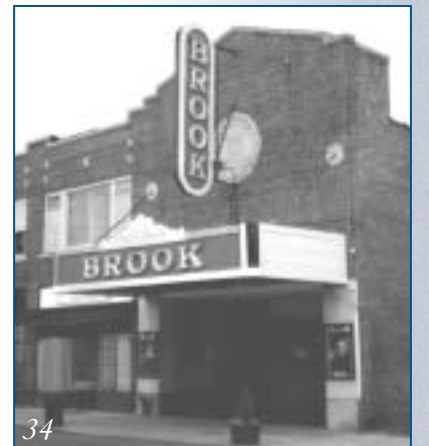
12. **Camden County**, Tomlinson House, Borough of Pine Hill, \$9,412 to the borough for the preparation of a preservation plan for this Federal-style home, which will become a house museum.
13. **Cape May County**, Franklin Street School, Cape May, \$17,993 to the Center for Community Arts for a preservation plan that will address future community uses for this school (1927) associated with Cape May's African American history.
14. **Cape May County**, Hereford Inlet Light Station, North Wildwood, \$21,000 to the city for construction documents for the third phase of this Victorian light station's restoration.
15. **Cumberland County**, Bivalve Shipping Sheds and Wharves, Commercial Township, \$37,500 to the Delaware Bay Schooner Project for the preparation of a preservation plan for turn-of-the-century commercial structures associated with the heyday of the Delaware Bay oyster industry.
16. **Cumberland County**, Fairfield Presbyterian "Old Stone" Church, Fairfield Township, \$7,500 to the Presbytery of West Jersey for the preparation of a preservation plan for the Georgian-style meeting house, built in 1780.
17. **Essex County**, Ahavas Sholom, Newark, \$25,725 to the congregation for the preparation of a historic register nomination and construction documents for the exterior restoration and a barrier-free entrance to the 1923 building, the last active historic synagogue in the city.
18. **Essex County**, Ambrose Ward Mansion, East Orange, \$33,188 to the Black United Fund for the preparation of a preservation plan and conditions assessment of the tile roof on the Renaissance-Revival style mansion that now houses a social service organization.
19. **Essex County**, Oakeside Bloomfield Cultural Center (OBCC), Bloomfield, \$12,975 to the OBCC for the preparation of a maintenance plan for the restored landscape and interpretive materials for the Colonial Revival gardens at this horticultural and community center.
20. **Essex County**, The Old Stone House, South Orange, \$6,413 to the South Orange Historic and Preservation Society for the preparation of construction documents for emergency stabilization of this vacant landmark.
21. **Hudson County**, Our Lady of Czestochowa Roman Catholic Church, Jersey City, \$32,550 for the preparation of a preservation plan for this 1831 landmark in the local historic district.
22. **Hunterdon County**, Historic Hunterdon County Courthouse, Flemington, \$50,000 to the county for the preparation of construction documents for the interior restoration and rehabilitation of this county landmark.
23. **Hunterdon County**, A. H. Holcombe House/Lambertville City Hall, Lambertville, \$40,500 to the city for the preparation of a preservation plan for a grand Second Empire-style residence that houses the City Hall.



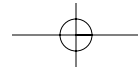
13

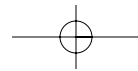


15



34





24



30



9



37

Historic Site Management Grants, listed by county

continued from previous page

24. **Mercer County**, Noah Hunt House, Mercer County, \$49,178 to the county for the preparation of a historic structure report that will include historical research, existing conditions analysis and archaeological investigation of the vacant and rapidly deteriorating Georgian-era house in a county park.
25. **Middlesex County**, Christ Episcopal Church, New Brunswick, \$50,000 for a schematic design report and construction documents for the church and parish house complex, prominent landmarks constructed in phases throughout the 19th century, and which house a variety of community-service programs.
26. **Monmouth County**, Taylor-Butler House/Marlpit Hall, Middletown, \$5,250 to the Monmouth County Historical Association for a landscape master plan for the grounds surrounding these 18th- and 19th-century houses.
27. **Morris County**, Acorn Hall, Morristown, \$10,155 to the Morris County Historical Society to develop architectural and programmatic plans for improving barrier-free access to the site and its collections.
28. **Morris County**, Fosterfields Living Historical Farm, Morris Township, \$50,000 to the Morris County Parks Commission for the preparation of a historic structure report for the farm outbuildings at this former estate, now a popular park and historic site.
29. **Morris County**, St. John's Episcopal Church, Dover, \$6,645 for the development of a master plan to guide the preservation and barrier-free improvements to this Gothic Revival-style church designed by noted architect Richard Upjohn in 1866.
30. **Morris County**, The Phoenix House, Borough of Mendham, \$33,225 to the borough for a preservation plan and construction documents for exterior restoration and barrier-free improvements to the prominent (1801) Mendham landmark that is used for borough offices and public meetings.
31. **Ocean County**, Manitou Park School, Berkeley Township, \$30,000 to the township for a preservation plan that will also assess barrier-free accessibility for this 1929 schoolhouse, which is historically linked with Lakewood's African-American community.
32. **Ocean County**, Wanamaker Hall, Island Heights, \$35,715 to the borough for the preparation of a landscape plan and update of existing preservation plan for this now-vacant landmark.
33. **Passaic County**, Schuyler-Colfax Historic House Museum, Wayne, \$50,000 to the township for a detailed roof study and construction documents to repair damage to this Dutch Colonial-style house museum, home to eight generations of one Wayne family.
34. **Somerset County**, Brook Theatre, Bound Brook, \$7,223 to the Somerset County Cultural Arts Center, for a historic register nomination for the theatre, a focus of neighborhood revitalization efforts.
35. **Union County**, Crescent Avenue Presbyterian Church, Plainfield, \$50,000 for a preservation plan and construction documents to guide masonry stabilization of this prominent landmark in the local historic district.
36. **Union County**, The Caldwell Parsonage, Union Township, \$33,121 to the Union Township Historical Society to update the existing preservation plan and prepare strategic and interpretive plans for the 1782 building that is now a repository for local history.
37. **Warren County**, The Vass Farmstead, Hardwick Township, \$28,650 to the local preservation society for the preparation of a historic structure report for this early 19th-century farm complex, which borders on a proposed county park.



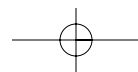
NEW JERSEY HISTORIC TRUST 2000/2001 AWARDS ASSISTANCE TO URBAN AREAS

The New Jersey Historic Trust's preservation grants reach the State's most densely populated cities and counties, encouraging preservation and rehabilitation of landmarks that represent revitalization and reinvestment in our urban communities.

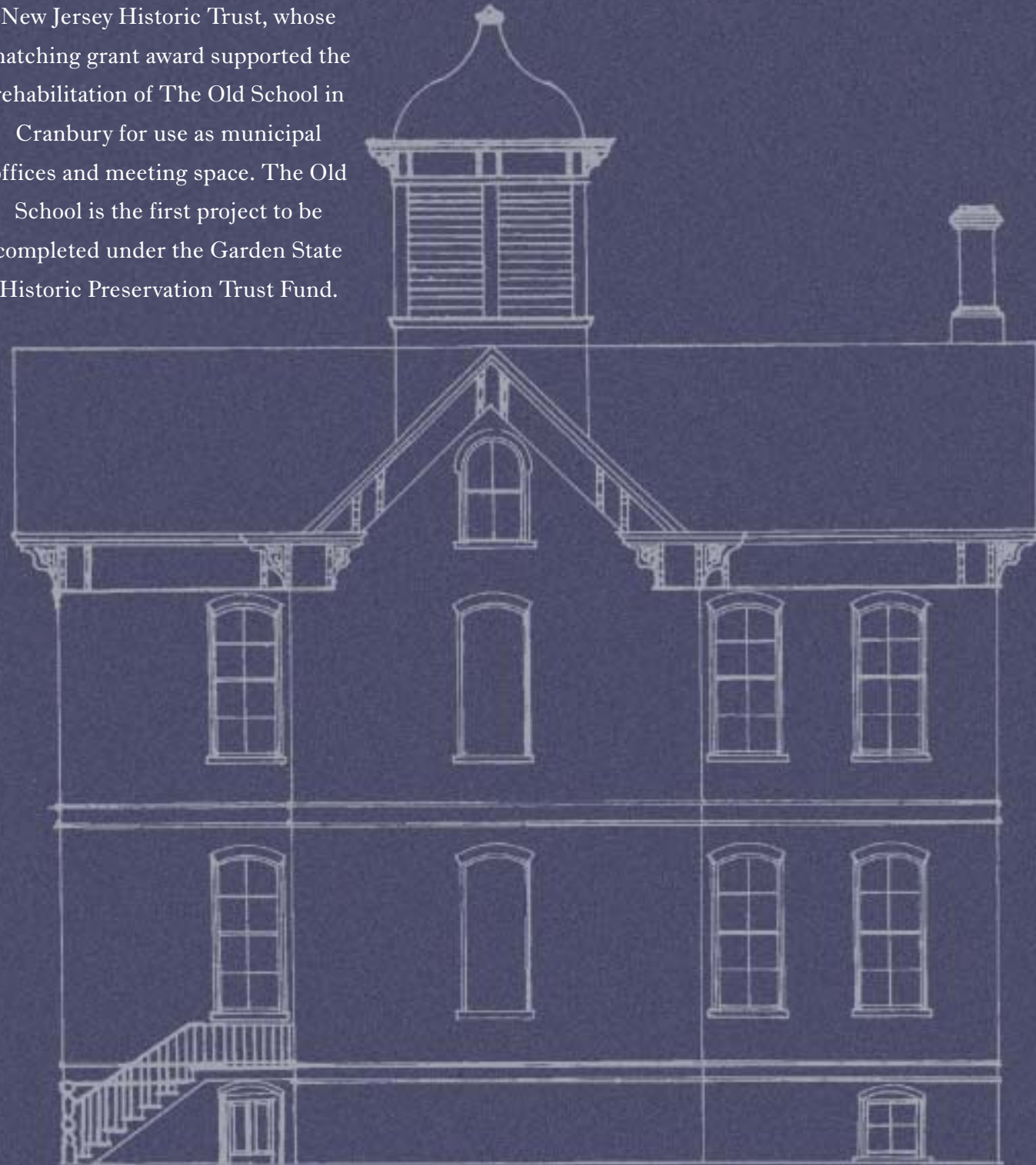
Densely populated counties (>2,000 persons/sq. mile)	RECOMMENDED AWARDS / 2000-2001				
	Grants to County		Grant to Urban Level I Cities with High Municipal Distress Index (MDI)		
	#Awards	Total	City	MDI Rank	Total
Hudson	3	\$ 453,138	Jersey City	8	\$ 300,974
Essex	7	1,014,279	Newark East Orange	5	718,632 33,188
Union	5	755,621	Plainfield	17	672,500
Bergen	5	757,819			
Passaic	3	820,880	Paterson	7	750,000
Middlesex	3	811,441	Perth Amboy New Brunswick	10 14	232,406 50,000
Camden	5	267,459	Camden	1	35,024
Cumberland			Bridgeton	19	260,127
Mercer			Trenton	2	800,000
TOTAL	31	\$4,880,637			\$3,852,851

56% of funding (\$4,880,637 of \$8,733,488) to most densely populated counties.

44% of funding (\$3,852,851 of total) to most distressed cities.



The preservation and adaptive use of New Jersey's historic schools is an ongoing concern for the New Jersey Historic Trust, whose matching grant award supported the rehabilitation of The Old School in Cranbury for use as municipal offices and meeting space. The Old School is the first project to be completed under the Garden State Historic Preservation Trust Fund.



*Line drawing of the Old School, Cranbury, Middlesex County.
Courtesy of Cranbury Landmarks, Inc.*